



Torrent Water Management

TORiser

www.toriser.co.uk

www.torrentwm.co.uk





CONTENTS

01

The Future

02

What is TORiser

03

Development

04

Strength & Simplicity

05

Onsite

06

In the yard

07

On the road

08

In the city

09

Design

10

WRC

11

Recycled

12

Approvals

WELCOME TO THE FUTURE

Introducing Torrent Water Managements **TORiser**;
a true innovation in Civil Engineering, protecting
your workforce and respecting your environment

Wastage Reducing



Health & Safety
compliance



Recycled &
Recyclable



Labour, Plant &
Time saving



What is TORiser...?

... A simple answer to a long standing problem!

TORiser is specifically designed to significantly reduce time, labour, wastage & plant movements when raising ironworks on site. The ultra lightweight design ensures health & safety compliance, while the robust material & design ensures performance on heavily trafficked highways.



TORiser development

The initial concept for TORiser was developed out of pure frustration for the many expensive failings and inconveniences of traditional manhole raising methods.

Both concrete & brick work pose numerous problems for Merchants, hauliers & contractors alike. Both are heavy and difficult to move around a distribution yard, site and on road, and with concrete severely prone to cracking and breakages, and brickwork being extremely time consuming a change was needed.

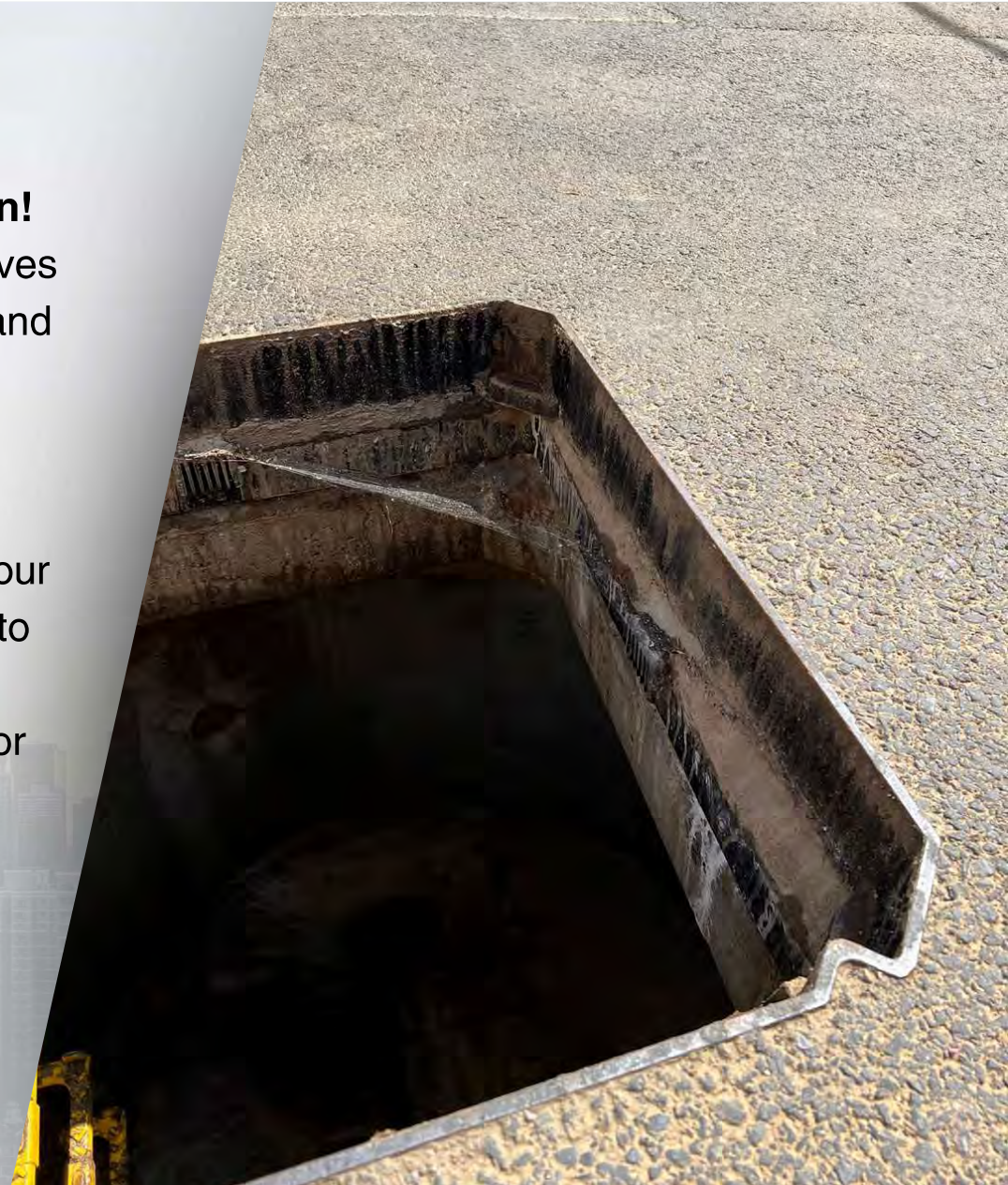
TORiser was therefore specifically developed to eradicate these problems



TORisers strength is in its simplicity...and design!

Each unit is manufactured from recycled HDPE, this gives TORiser excellent strength, a massively long lifespan and an ultra light weight

As a means to raise ironwork, it really is the quickest, easiest and most robust way to do this. Simply place your 65mm TORiser on top of your cover slab and mortar into place. The engineered design means you need never worry about rough and sharp edges, uneven surfaces or hairline cracks again!





TORiser: Onsite

Imagine a product that reduces labour intensity, eradicates breakages, ensures Health and Safety compliance, reduces plant movements, is made from recycled materials, and is cost saving, well, youve just imagined TORiser!

TORiser has been independently tested and verified to in excess of 40t D400 loading, meaning you can be assured of its strength and ability to handle the toughest road conditions

All of this in a product that weighs only 6kg per unit, thats 90% lighter then its concrete competitor

6KG

Product weight

D400

Loading

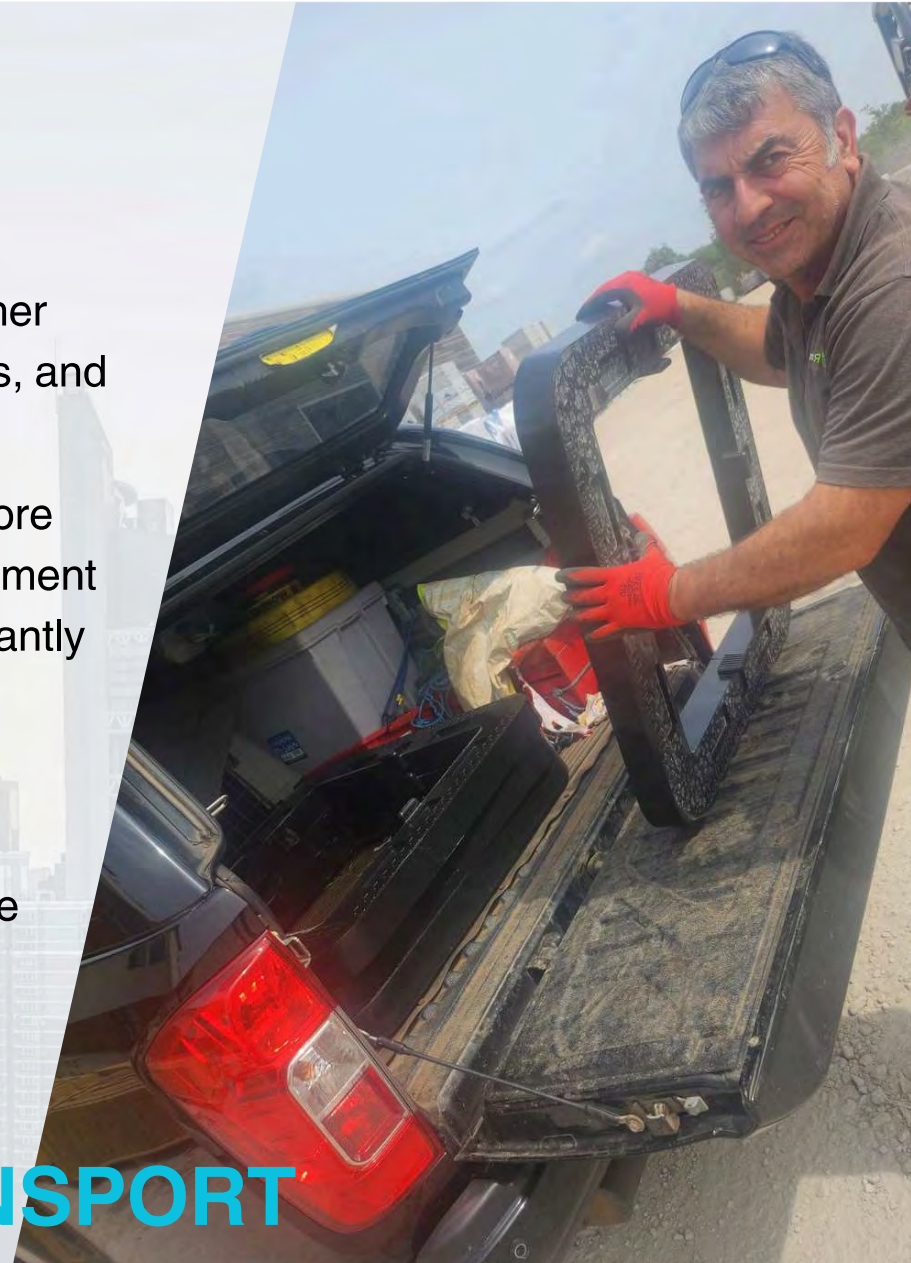
TORiser: In The Yard

The initial development of TORiser was born through the frustration and consistent loss of product of stocking and distributing concrete seating rings. The difficulty of splitting pallets down safely to customer requirements, the consistent use of heavy machinery to achieve this, and the size of vehicle required to transport and offload.

TORiser relieves all of these problems in a product that is safe to store and manually handle, that is robust enough to not suffer from movement based breakages, and can be transported and offloaded on significantly smaller and more fuel efficient vehicles.

Loss of product through breakages within distributors yards on average run at **20%** for the concrete competitor, TORiser all but eradicates these losses, also significantly reducing plant and vehicle movements, and ensuring your yard staff are operating in a safe environment

SAFE, STRONG & EASY TO TRANSPORT



ON THE ROAD

Reducing vehicle numbers and size is a priority if we are to reduce carbon emissions, the ease and versatility of TORiser means you can deliver a full sites worth; e.g 20 manholes, with 2 TORisers each with a weight of 240kg, the equivalent in concrete would weigh over 3.4 tonnes!

Smaller / fewer vehicles



No breakages in transit



Significantly lowered emissions



TORiser: In The City Centre

Road repairs and reinstatement works are an ongoing headache for local Highways authorities: Road closures, HGV's, pedestrian safety, access issues, and operative safety.

The use of TORiser significantly eases all of these headaches. There is now no need need for large, dirty HGVs in the city centre, the operative can now transport all materials required to repair the manhole in their van, thus ensuring pedestrian safety, nullifying access issues and closures due to crane operated offloading.

The speed of repair and amount of labour required is also vastly reduced, in most cases by in excess of **50%!** Keeping your roads running smoothly, and significantly easing congestion.



TORiser: Design & Efficiency

With its unique “T Grip” system, TORiser ensures that mortar keys to the engineered surface, giving excellent stability. Each unit is printed with the TORiser name and WRC certificate number, so you can be assured upon inspection that the correct, approved product has been used.

600 x 600 & 675 x 675



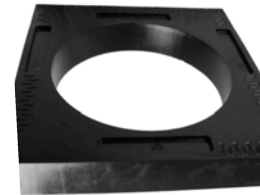
6KG per unit.
Engineered quality,
with authentication
stamp and “T Grip”
keys

U Shaped Gully Riser



6kg per unit.
Engineered quality
with authentication
stamp and “T Grip”
keys

Square to Round Gully Riser



8kg per unit.
Engineered quality
with authentication
stamp and “T Grip”
keys

WRC ACCREDITATION

01

Strength

Independently and
rigorously tested by
WRC

02

Suitability

Fully approved for
use on UK
highways.

03

Analysis

Raw material fully
analysed for
suitability for use on
the road network

04

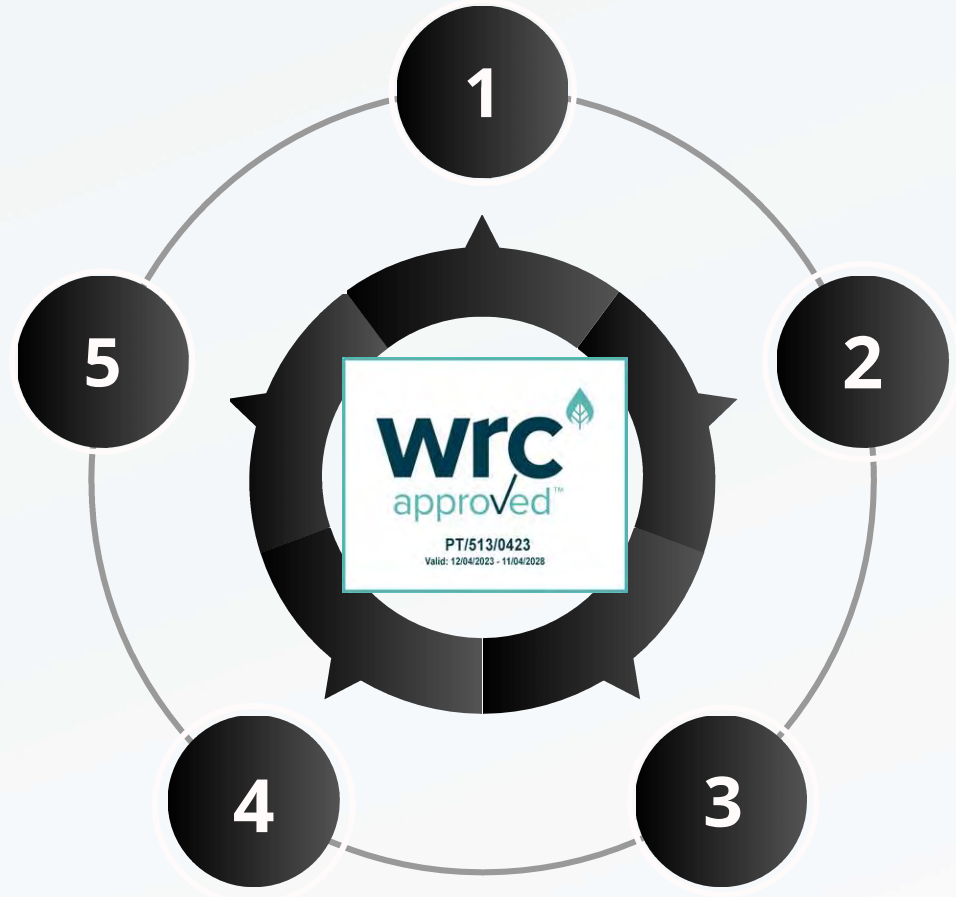
Manufacturing

Manufacturing
facilities fully audited
and approved to
exacting levels

05

Quality

Fully engineered
product ensuring
every unit leaves the
factory to the same
high standard





TORiser: Recycled & Recyclable

TORiser was specifically designed to be as wastage efficient, not only does TORiser vastly reduce on site wastage, it is also manufactured from a minimum of 20% recycled material, and 100% end of life recyclable

100%

Recyclable

20%+

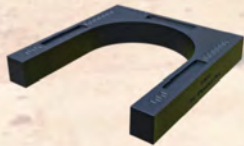
Recycled material

TORiser: Approvals



The issue of adoptions within the water industry can sometimes be a long drawn out experience, especially for new products, however, due to its robust design, WRC accreditation, green credentials and health & safety compliance, TORiser has already been granted full adoptable status by the above companies, with many more to follow that are currently on ongoing trial.

TORiser



Horshoe Gully Riser

40T D400 Loading

6kg Weight per unit

100mm Deep

Fully WRC Approved



600 x 600 seating ring

40t D400 Loading

6kg Weight per unit

65mm Deep

Fully WRC Approved



675 x 675 seating ring

40t D400 Loading

6kg Weight per unit

65mm Deep

Fully WRC Approved



Square Gully Riser

40T D400 Loading

6kg Weight per unit

100mm Deep

Fully WRC Approved



TORISER

www.toriser.co.uk

www.torrentwm.co.uk

01623 272882

sales@toriser.co.uk

enquiries@torrentwm.co.uk



PT/513/0423
Valid: 12/04/2023 - 11/04/2028

