



# Sustainable surface water drainage solutions



**A better way of working for a safer more sustainable environment**

**[www.torrentwm.co.uk](http://www.torrentwm.co.uk)**

 Produced in the EU

## TORkerb 60000

The 60000 SP Range has a full batter (45 Degree) Splay Profile used primarily on fast moving carriageways, verges and rural infrastructure where there is no rear footway.

The profile is designed to allow accidental overrun but encourage vehicles back towards the carriageway.



## TORkerb SP 60000

Item Code	Description	Weight/kg	Length/mm	Width/mm	Depth/mm	Useable Flow Area mm <sup>2</sup>	Kerb Upstand/mm	Load Classification
60000	TORkerb 305 Full Batter / Splay Standard Unit	7	500	215	305	22,182	75 / 100	EN1433 : 2002-D400



### TORkerb 305 Splay Standard Unit

The recycled & recyclable lightweight standard units are manufactured from a hydraulically efficient material and have a large useable volume. This means large areas can be drained quickly and safely, protecting surfaces by taking run-off at multiple points across the whole length of the kerb-line.

Item Code	Description	Weight/kg	Length/mm	Width/mm	Depth/mm	Kerb Upstand/mm	Load Classification
60050	TORkerb 305 Full Batter / Splay Gully Outfall	68	500	457	353	75 / 100	EN1433 : 2002-D400

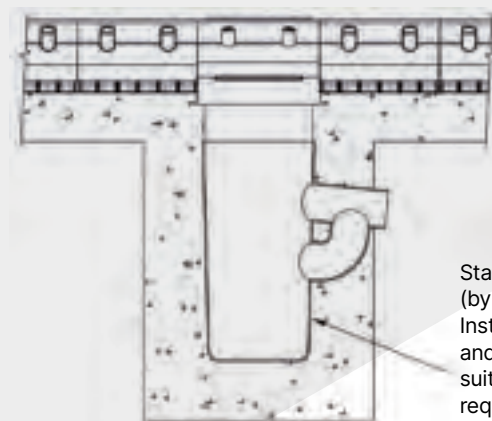


### TORkerb 305 Full Batter / Splay Gully Outfall

The TORkerb Full Batter ductile iron top and base units provide a high quality, heavy duty outlet point.

The units allow for single or dual inflows and have a large access area for maintenance.

### Gully Installation Detail



Standard Gully Pot  
(by others)  
Installed at depth  
and orientation to  
suit invert  
requirements

A better way  
of working for  
a safer more  
sustainable  
environment



# TORkerb 60000

Item Code	Description	Weight/kg	Width/mm	Depth/mm
70090	TORkerb 305 Universal End Cap / Outlet	0.2	215	305



## TORkerb 305 Universal End Cap / Outlet

TORkerb Universal end caps are cut to profile on site and fitted to access / outlets and standard units. Simply apply sealant up to the window / entry height and fix. Caps can be cut to allow for below ground pipe connections.

Item Code	Description	Weight/kg	Length/mm	Width/mm	Depth/mm	Useable Flow Area m <sup>2</sup>	Kerb Uprand/mm	Load Classification
60072	TORkerb 305 Splay Rodding Access / Outlet Unit	16	250	218	360	22,182	75 / 100	EN1433 : 2002-D400



## TORkerb 305 Splay Rodding Access / Outlet Unit

TORkerb solid ductile iron access points can be installed at the head of each run and at regular intervals subject to site conditions. Units are supplied with a blank plug which can be removed, sealed and refitted. Alternatively they can be used as a robust shallow or intermediate outlet point (EN1401-162 Dia Rear Pipe Outlet).

Item Code	Description	Weight/kg	Length/mm	Width/mm	Depth/mm	Radius/m	Kerb Uprand/mm	Load Classification
60100	TORkerb SP External Radius Unit 7/5	7	480	215	305	7/5	75 / 100	EN1433:2002-D400
60104	TORkerb SP External Radius Unit 12/8	7	480	215	305	12/8	75 / 100	EN1433:2002-D400
60110	TORkerb SP External Radius Unit 27/13	7	480	215	305	27/13	75 / 100	EN1433:2002-D400
60200	TORkerb SP Internal Radius Unit 7/5	7	480	215	305	7/5	75 / 100	EN1433:2002-D400
60204	TORkerb SP Internal Radius Unit 12/8	7	480	215	305	12/7	75 / 100	EN1433:2002-D400
60210	TORkerb SP Internal Radius Unit 27/13	7	480	215	305	27/13	75 / 100	EN1433:2002-D400



## TORkerb SP External/Internal Radius Unit

Standard Units can be supplied faceted to suit both external and internal radii.

## TORkerb 70000

The 70000 HB Range has a half battered profile used primarily on roads with a rear footway or at surface boundaries to hard standings and car parking areas.

The profile is designed to deter vehicle overrun and deflect traffic back onto the carriageway.



# TORkerb 70000

Item Code	Description	Weight/kg	Length/mm	Width/mm	Depth/mm	Useable Flow Area mm <sup>2</sup>	Kerb Upstand/mm	Load Classification
70000	TORkerb 305 Half Batter Standard Unit	8.4	500	215	305	21,197	100 / 125	EN1433 : 2002-D400



## TORkerb 305 Half Batter Standard Unit

The recycled & recyclable lightweight standard units are manufactured from a hydraulically efficient material and have a large useable volume. This means large areas can be drained quickly and safely, protecting surfaces by taking run-off at multiple points across the whole length of the kerb-line.

Item Code	Description	Weight/kg	Length/mm	Width/mm	Depth/mm	Kerb Upstand/mm	Load Classification
70050	TORkerb 305 Half Batter Gully Outfall	68	500	457	353	100 / 125	EN1433 : 2002-D400

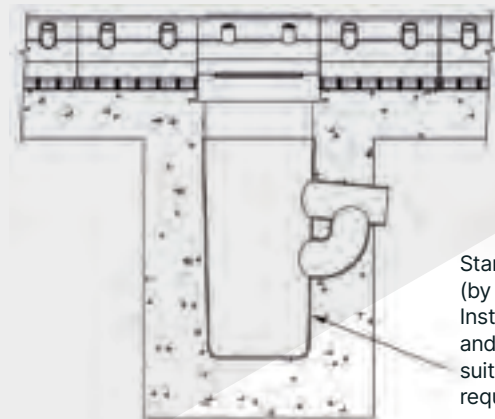


## TORkerb 305 Half Batter Gully Outfall

The TORkerb Half Batter ductile iron top and base units provide a high quality, heavy duty outlet point.

The units allow for single or dual inflows and have a large access area for maintenance.

## Gully Installation Detail



Standard Gully Pot  
(by others)  
Installed at depth  
and orientation to  
suit invert  
requirements

A better way  
of working for  
a safer more  
sustainable  
environment



# TORkerb 70000

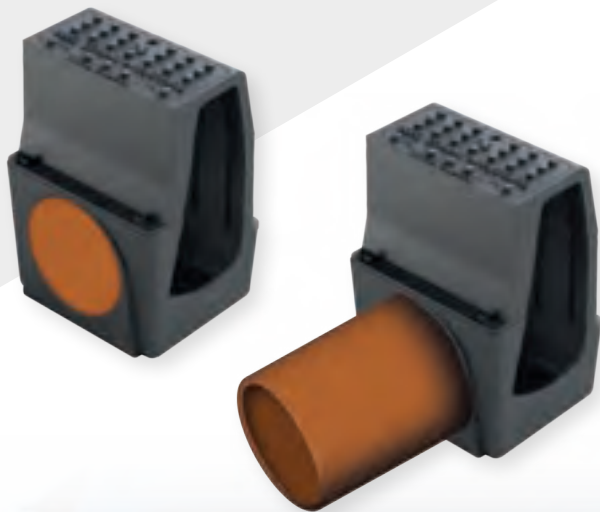
Item Code	Description	Weight/kg	Width/mm	Depth/mm
70090	TORkerb 305 Universal End Cap / Outlet	0.2	215	305



## TORkerb 305 HB End Cap / Outlet

TORkerb Universal end caps can be fitted to access/ outlets and standard units. Simply apply sealant up to the window/entry height and fix. Caps can be cut to allow for below ground pipe connections.

Item Code	Description	Weight/kg	Length/mm	Width/mm	Depth/mm	Useable Flow Area m <sup>2</sup>	Kerb Upstand/mm	Load Classification
70072	TORkerb 305 HB Rodding Access / Outlet Unit	14	250	218	360	21,197	100 / 125	EN1433 : 2002-D400



## TORkerb 305 HB Rodding Access / Outlet Unit

TORkerb solid ductile iron access points can be installed at the head of each run and at regular intervals subject to site conditions. Units are supplied with a blank plug which can be removed, sealed and refitted. Alternatively they can be used as a robust shallow or intermediate outlet point (EN1401-162 Dia Rear Pipe Outlet).



## Drop Kerbs & Centre Stones

Item Code	Description	Weight/kg	Length/mm	Width/mm	Depth/mm	Load Classification
70010	TORkerb Left Hand Drop Kerb L305	7	500	215	305 / 255	EN1433:2002-D400
70015	TORkerb Left Hand Drop Kerb L255	5	500	215	255 / 205	EN1433:2002-D400
70020	TORkerb Right Hand Drop Kerb R305	7	500	215	305 / 255	EN1433:2002-D400
70025	TORkerb Right Hand Drop Kerb R255	5	500	215	255 / 205	EN1433:2002-D400
70035	TORkerb Drainable Centre Stone 205	4.8	500	215	205	EN1433:2002-D400



We offer standard drop configurations from 125mm/ 100mm full kerb height. Road surfacing can be rolled to accommodate a 0-6mm or 25mm upstand through the crossing. Duradrain one piece centre stones are supplied with vertical 8mm pedestrian friendly inlets to maintain drainage through each drop section.



**A better way of working for a safer more sustainable environment**



## Radius Units & Corners

Item Code	Description	Weight/kg	Length/mm	Width/mm	Depth/mm	Radius/m	Kerb Upstand/mm	Certification	Load Classification
70100	TORkerb HB External Radius Unit 7/5	7	480	215	305	7/5	75 / 125	EN1433:2002	D400
70104	TORkerb HB External Radius Unit 12/8	7	480	215	305	12/8	75 / 125	EN1433:2002	D400
70110	TORkerb HB External Radius Unit 27/13	7	480	215	305	27/13	75 / 125	EN1433:2002	D400
70200	TORkerb HB Internal Radius Unit 7/5	7	480	215	305	7/5	75 / 125	EN1433:2002	D400
70201	TORkerb HB Internal Radius Unit 12/8	7	480	215	305	12/8	75 / 125	EN1433:2002	D400
70210	TORkerb HB Internal Radius Unit 27/13	7	480	215	305	27/13	75 / 125	EN1433:2002	D400

### TORkerb HB Internal/External Radius Unit

Standard Units can be supplied faceted to suit both external and internal radii.



### TORkerb Internal/External 90 Deg Corner

Standard full height and dropped units can be supplied cut and fixed to provide precise external or internal angles.

Item Code	Description	Weight/kg	Length/mm	Width/mm	Depth/mm	Kerb Upstand/mm	Certification	Load Classification
70005	TORkerb External HB 90 Deg Corner	7	300	300	305	75 / 100	EN1433:2002	D400
70006	TORkerb Internal HB 90 Deg Corner	7	300	300	305	75 / 100	EN1433:2002	D400
70031	TORkerb External CS 90 Deg Corner	7	300	300	205	0 / 25	EN1433:2002	D400
70032	TORkerb Internal CS 90 Deg Corner	7	300	300	205	0 / 25	EN1433:2002	D400



# REDUCING CARBON + REPURPOSING WASTE + REDUCING RISK + ENVIRONMENTAL IMPACTS

CKD (Combined Kerb & Drainage) is already an accepted and adoptable method of highway drainage. Our shallow profile drainable units give designers further options to allow for shallower kerb upstands, ideal for cycleways with designated lane separation.

## TORkerb SHALLOW PROFILE

Modern infrastructure design for our towns and cities is changing to meet the new net carbon zero targets set by governments to reduce environmental impacts. Designers are creating roads and pavements to encourage increased use for pedestrians, cyclists, wheelchair users and public transport.





# TORkerb BN Shallow Profile

Item Code	Description	Weight/kg	Length/mm	Width/mm	Depth/mm	Kerb Upstand/mm	Load Classification
70035		4.8	500	215	205	0-25	EN1433:2002-D400
70038		5.5	500	215	240	35-60	EN1433:2002-D400



## Shallow Profile Standard Units

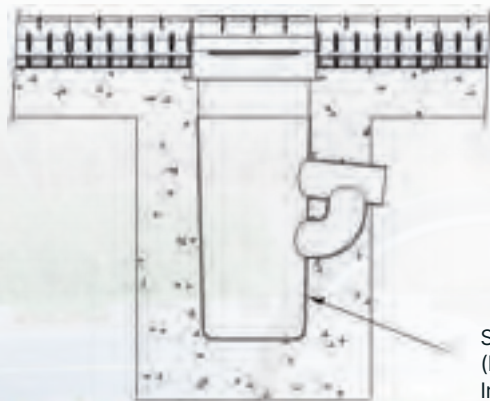
The recycled & recyclable lightweight drainable units are manufactured from a hydraulically efficient material and have a large useable volume. This means large areas can be drained quickly and safely, protecting surfaces by taking runoff at multiple points across the whole length of the kerb-line.

Item Code	Description	Weight/kg	Length/mm	Width/mm	Depth/mm	Kerb Upstand/mm	Load Classification
70055	TORkerb B/N Gully Outfall	58	500	457	253	0 / 60	EN1433 : 2002-D400
70058	TORkerb B/N GO Access only c/w Sealed Base Plate	60	500	457	253	0 / 60	EN1433 : 2002-D400



## TORkerb Bn Gully Outfall

The TORkerb Bullnose ductile iron top and base units provide a high quality, heavy duty outlet point. The units allow for single or dual inflows and have a large access area for maintenance. This unit can be supplied with a sealed baseplate when used as access only.

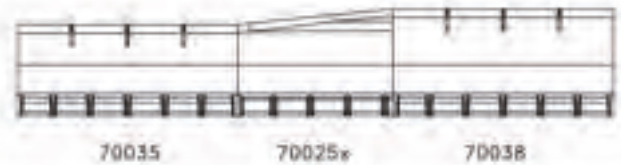


Standard Gully Pot (by others)  
Installed at depth and orientation to suit invert requirements



## Shallow Profile Transition Unit

We can also supply pre-fabricated handed drop/transitions to accommodate variable changes in height common with low profile designs where crossing points are shallow.



For more information please see our  
Design & Installation Guide.



## TORchannel

The 50000 TORchannel Range is a traditional monolithic linear surface water drainage system. The recycled & recyclable lightweight standard units are manufactured from a hydraulically efficient material and have a large useable volume. This means large areas can be drained quickly and safely, protecting surfaces by taking run-off at multiple points across the whole length of the channel-line.



**REDUCING CARBON +  
REPURPOSING WASTE +  
REDUCING RISK +  
ENVIRONMENTAL IMPACTS**

# TORchannel

Item Code	Description	Weight/kg	Length/mm	Width/mm	Depth/mm	Useable Flow Area mm <sup>2</sup>	Slot Type	Colour	Load Classification
50000	TORchannel 160mm Standard Unit	4.5	500	187	160	12,479	8mm Dual-Ped	Black	EN1433:2002-D400
50002	TORchannel 260mm Standard Unit	8	500	187	260	18,246	8mm Dual-Ped	Black	EN1433:2002-D400



### TORchannel Standard Unit

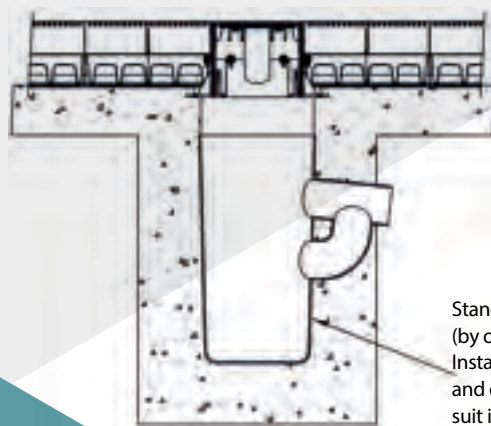
The recycled & recyclable lightweight standard units are manufactured from a hydraulically efficient material and have large useable volume. This means large areas can be drained quickly and safely, protecting surfaces by taking run-off at multiple points across the whole length of the channel-line.

Item Code	Description	Weight/kg	Length/mm	Width/mm	Depth/mm	Load Classification
50060	TORchannel Universal Outfall	38	360	360	461	EN1433 : 2002-D400
50064	TORchannel UO Junction/angle c/w Sealed Base Plate	39	360	360	461	EN1433 : 2002-D400



### TORchannel Universal 4-Way Inflow Outfall/ Junction/Corner Unit

The TORchannel ductile iron grate and base units provide a high quality, heavy duty outlet point. The unit allows for four way channel inflows and has a large access area for maintenance. This unit can be supplied with a sealed baseplate to provide a robust, fully supported corner/junction unit.



Standard Gully Pot (by others)  
Installed at depth and orientation to suit invert requirements

A better way of working for a safer more sustainable environment



## TORchannel

Item Code	Description	Weight/kg	Length/mm	Width/mm	Depth/mm	Useable Flow Area mm <sup>2</sup>	Slot Type	Colour	Load Classification
50072	TORchannel 260mm Rodding Access	18	250	202	360	18246	8mm Dual-Ped	Black	EN1433 : 2002-D400W



### TORchannel 260mm Rodding Access

TORchannel solid ductile iron access points can be installed at the head of each run and at regular intervals subject to site conditions. Units are supplied with a blank plug which can be removed, sealed and refitted. Alternatively they can be used as a robust shallow or intermediate outlet point (EN1401-162 Dia Rear Pipe Outlet) .

Item Code	Description	Weight/kg	Width/mm	Depth/mm
50090	TORchannel End Cap	0.2	187	360

**TORchannel End Cap** TORdrain Universal end caps can be fitted to access/ outlets and standard units. Simply apply sealant up to the window / entry height and fix. Caps can be cut to allow for below ground pipe connections.



## TORkerb/TORchannel Sealant

Item Code	Description	Weight/kg	Volume	Coverage	Colour	COSHH Data
80000	TORkerb One Part Low Modulus Polyurethane Sealant	0.8	600ml	10 Joints / Tube	Grey	See Website Downloads
80010	Torrent Sealant Applicator	2	N/A	N/A	N/A	N/A
80005	TORchannel One Part Low Modulus Polyurethane Sealant	0.8	600ml	10 Joints / Tube	Black	See Website Downloads



TORkerb/TORchannel sealant should be applied around the channel body up to the road surface / inlet level.

All Units have a flush face to face contact so each unit can be hammered to line and level creating an effective seal across the whole joint width. The bed and brace within the retention elements create a single structure and unlike traditional jointed or laid-in channels, there are no weak points across the joint providing a longer lasting seal in service.

For highways adoption all joints must be sealed. (EN1433-HA-Doc\_IAN117/08 Rev 2.)

For more information please see our [Design & Installation Guide](#).

A better way  
of working for  
a safer more  
sustainable  
environment