

# TORcomm

Preformed Motorway/Highway communication chambers

## Installation details for TORcomm chambers

**Step 1.** Ensure that the area to be excavated will allow for the chambers length, width and height and there is sufficient area for the backfill, in principle allowing 150mm for the backfill material.

**Step 2.** The sub base must be well compacted to a depth of 100mm and either purpose made or an in situ concrete base should be formed making allowance for any drainage connection, sump or incoming services.

**Step 3.** Place base units first and locate over services or sump outlet. Next stack units in order to achieve the desired depth, careful to make sure steps are in order and bearers are placed correctly.

**Step 4.** Backfill material can now be introduced and compacted.

**Step 5.** The last 100mm haunching is advised to be concrete in accordance with the cover specification and final loading requirements.

**TYPE A** 1300x850mm

**TYPE B** 750x675mm

**TYPE C** 600x450mm

**TYPE D** 2700x675xmm

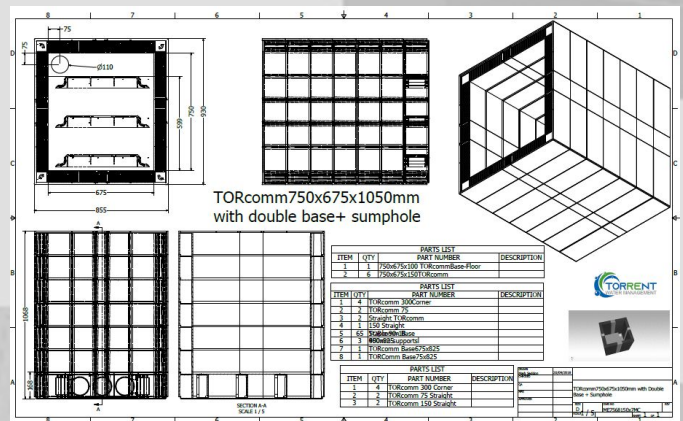
**TYPE E** 400x400xmm

Methods and details for installation of TORcomm Access Chambers. These are guidelines, and not project specific. It is understood there are alternative ways that might be required and/or recommended based on site or project conditions.

Torrent Water Management Ltd reserves the right to change these guidelines and asks clients to contact the office for with any specific questions. Torrent Water Management makes no express or implied warranty or guarantee of the techniques, construction methods or materials identified herein.

The customer shall comply with all laws, regulations, codes and orders of any authority having jurisdiction over the customer and which relate to the customer's installation, maintenance and use of Torrent Water Management products.

If the customer's installation or use of any products contravenes any such laws, regulations, codes or orders of such authorities, the customer shall be responsible for the violations thereof and shall bear the costs, expense and damages attributable to its failure to comply with the provisions of such laws, ordinances, rules, regulations, codes or orders.



Tel. 01623 272882.

e enquiries@torrentwm.co.uk www.torrentwm.co.uk