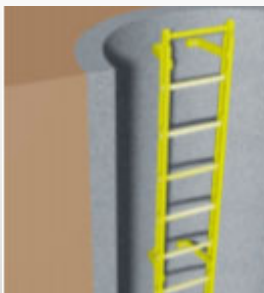
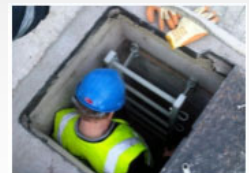




TORladder

TORLadder composite systems are designed for use in storm and foul sewer systems and manufactured under ISO9001 to BS14396.

- Lightweight - 4KG/Mtr
- Easy assembly or supplied assembled
- Grey/Black for Potable water or Storm water
- Yellow for foul sewerage systems
- 260KG load applied to centre of rung with minimal deflection



- 25 year product guarantee
- Sustainable materials
- Meets health and safety requirements for manual handling
- Come complete with fixings



Torrent Water Management Ltd

Sales @torrentwm.co.uk

tel. 07568 489523